

myone



**telescopic
sliding doors**

LUCE T

The Luce T telescopic sliding door operators are perfect for automating locations where there is limited space to the side of the passage. Available in two-leaf (100+100 kg) or four-leaf (70+70+70+70 kg) versions.



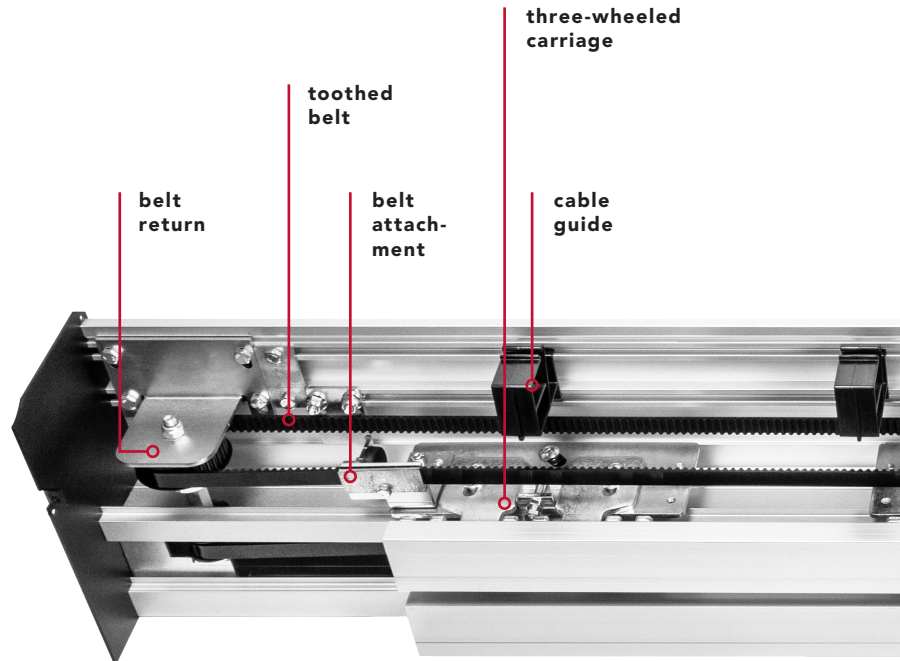
LUCET



download LUCET
instructions
and certificates

www.myoneautomation.com

Operator for sliding doors with three-wheeled carriages, which ensures that the doors are very stable and easy to adjust, both in height and depth. The operator has a control unit with LED alphanumeric display, full-range switching power supply (100-240 V 50/60 Hz) and battery charger. The presence of a USB connector makes it quick and easy to update the firmware as well as to copy parameters and operating logics to a new system instantly. Continuous operation guaranteed.

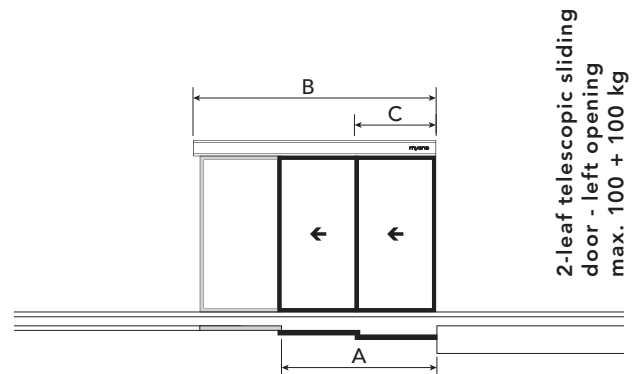


2 leaves
max. weight
100 + 100 kg



4 leaves
max. weight
70 + 70 + 70 + 70 kg

preassembled telescopic doors

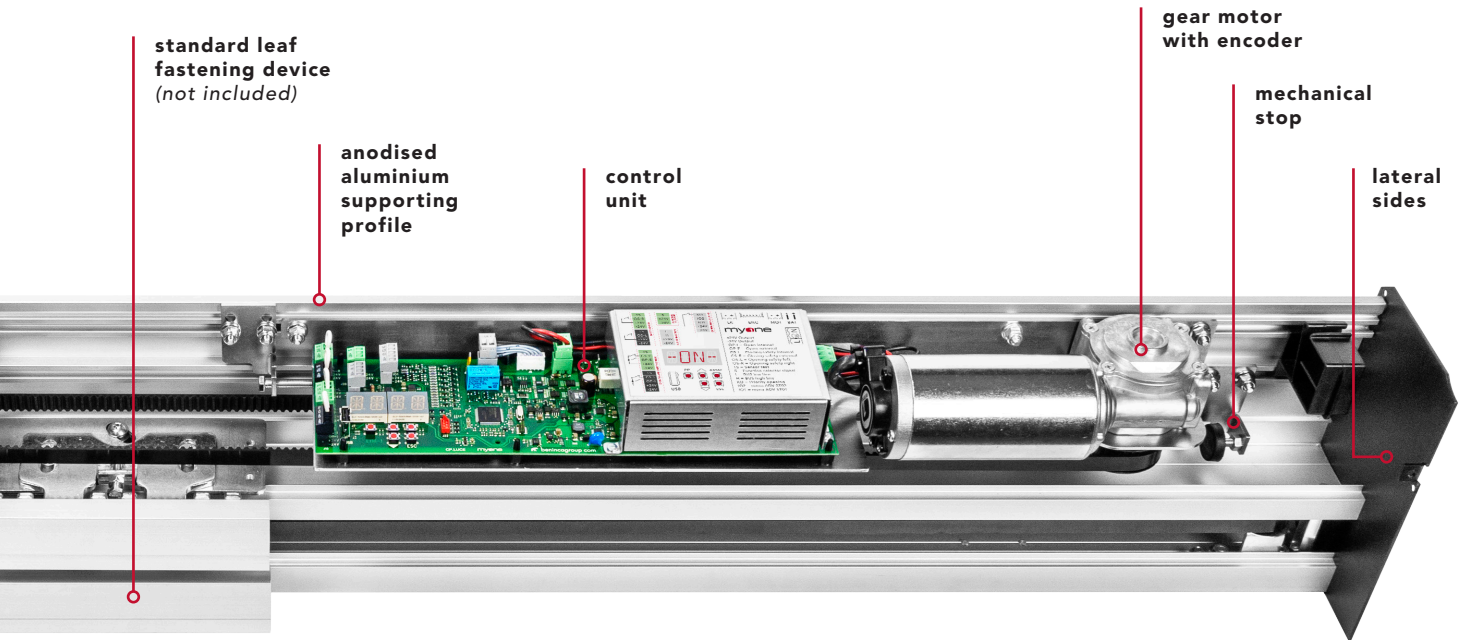


technical data

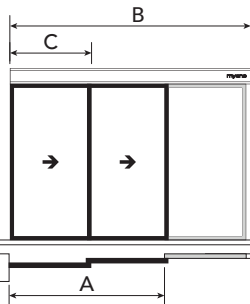
| | |
|-------------------------------|--------------------------------------|
| power supply | full range 100÷240 Vac 50/60 Hz |
| power consumption | 70 W |
| power consumption in stand-by | 3 W |
| accessories power supply | 24 Vdc = / 1 A max |
| maximum speed 2 doors | 0.8 m/s |
| maximum speed 4 doors | 1.6 m/s |
| maximum load 2 doors | 100 + 100 kg |
| maximum load 4 doors | 70 + 70 + 70 + 70 kg |
| type and frequency of use | continuous operation = 100% |
| operating temperature | -15°C / +50°C |
| protection degree | IP20 |
| data backup memory | USB flash drive |

| | A | B | C | |
|------------|---------|---------|----|---------|
| LUCET1902L | 1180 mm | 1900 mm | 2x | 666 mm |
| LUCET2102L | 1320 mm | 2100 mm | 2x | 730 mm |
| LUCET2502L | 1590 mm | 2500 mm | 2x | 860 mm |
| LUCET2902L | 1850 mm | 2900 mm | 2x | 995 mm |
| LUCET3302L | 2120 mm | 3300 mm | 2x | 1130 mm |
| LUCET3702L | 2385 mm | 3700 mm | 2x | 1260 mm |
| LUCET4202L | 2710 mm | 4200 mm | 2x | 1430 mm |
| LUCET5002L | 3250 mm | 5000 mm | 2x | 1695 mm |
| LUCET6502L | 4250 mm | 6500 mm | 2x | 2195 mm |

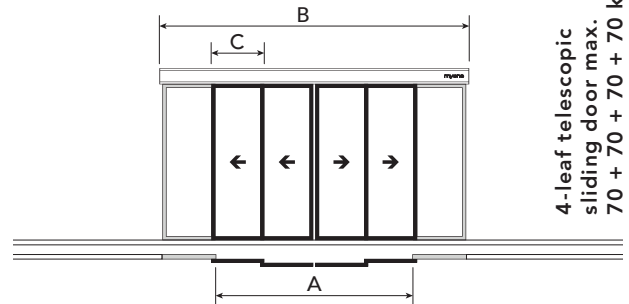
*The values of the passage size (A) and of the leaf (C) are indicative and include an overlap of around 50 mm.



2-leaf telescopic sliding door - right opening max. 100 + 100 kg



4-leaf telescopic sliding door max. 70 + 70 + 70 + 70 kg



| | A | B | C |
|------------|---------|---------|------------|
| LUCET1902R | 1180 mm | 1900 mm | 2x 666 mm |
| LUCET2102R | 1320 mm | 2100 mm | 2x 730 mm |
| LUCET2502R | 1590 mm | 2500 mm | 2x 860 mm |
| LUCET2902R | 1850 mm | 2900 mm | 2x 995 mm |
| LUCET3302R | 2120 mm | 3300 mm | 2x 1130 mm |
| LUCET3702R | 2385 mm | 3700 mm | 2x 1260 mm |
| LUCET4202R | 2710 mm | 4200 mm | 2x 1430 mm |
| LUCET5002R | 3250 mm | 5000 mm | 2x 1695 mm |
| LUCET6502R | 4250 mm | 6500 mm | 2x 2195 mm |

| | A | B | C |
|-----------|---------|---------|------------|
| LUCET2904 | 1860 mm | 2900 mm | 4x 510 mm |
| LUCET3304 | 2120 mm | 3300 mm | 4x 580 mm |
| LUCET3704 | 2390 mm | 3700 mm | 4x 648 mm |
| LUCET4204 | 2725 mm | 4200 mm | 4x 730 mm |
| LUCET5004 | 3260 mm | 5000 mm | 4x 865 mm |
| LUCET6504 | 4260 mm | 6500 mm | 4x 1110 mm |

the preassembled operator is made up of:

control unit | gear motor with encoder | three-wheeled sliding carriages | anodised aluminium supporting profile and cover | belt return | mechanical stop | belt | cable guide | screw kit | lateral sides



discover the Myone frame range



www.myoneautomation.com

framed door accessories - commercial frame



01AL0030 - 1000 mm
01AL0031 - 1500 mm
01AL0032 - 2000 mm

Aluminium floor guide for one leaf.



01FE0018

Floor guide slider.



01FE0018T

Floor guide slider for fast movable door.
- right/left



01AL0008 - 1000 mm
01AL0009 - 1500 mm
01AL0010 - 2000 mm

Standard leaf fastening device complete with fixing brackets for the carriage.

glass door accessories - fastening set for glass leaves with pre-drilled holes



99AC0004

Fastening set for glass leaf (10-12 mm) with pre-drilled holes.
- L. 1000 mm



99AC0005

Fastening set for glass leaf (10-12 mm) with pre-drilled holes.
- L. 1500 mm



99AC0006

Fastening set for glass leaf (10-12 mm) with pre-drilled holes.
- L. 2000 mm



01FE0050

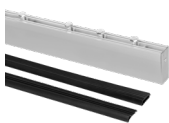
Glass door stainless steel slider.



01FE0050T

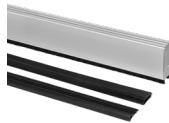
Floor guide slider for fast movable door.
- right/left

glass door accessories - fastening clamp set for glass leaves



99AC0001 - 1000 mm
99AC0002 - 1500 mm
99AC0003 - 2000 mm

Fastening set for glass leaf (10-12 mm) to clamp.



99AC0007 - 1000 mm
99AC0008 - 1500 mm
99AC0009 - 2000 mm

Bottom fastening clamp set with brushes for glass leaf (10-12 mm thickness).



01FE0018

Floor guide slider.



01FE0018TG

Floor guide slider for fast movable door.
- right/left



accessories



99BA0003

Emergency battery kit with wiring and bracket.



99EB0001

Electromechanical lock kit with release cord.



99EB0003

Emergency electromechanical lock kit with release cord.



01FE0059

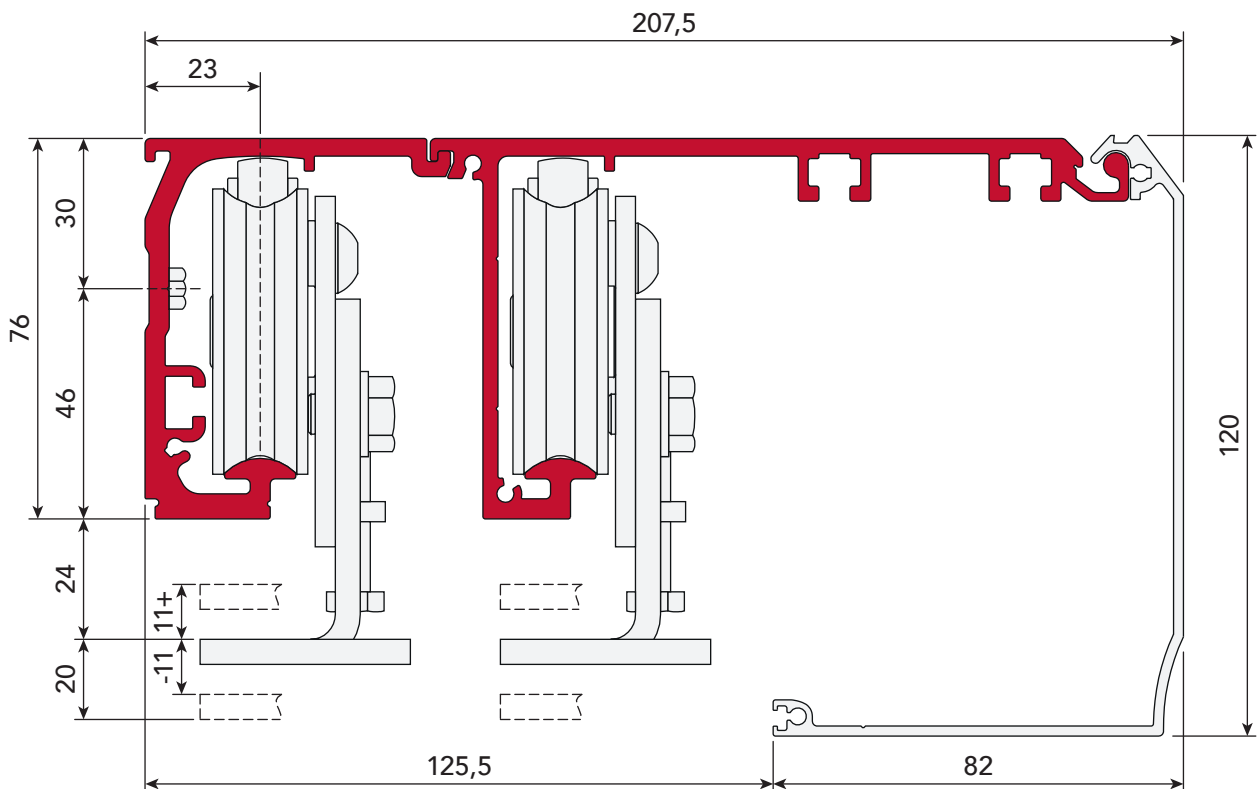
Safe for external release.



99AE0002

Opening device with elastic.

operator cross-section
technical drawing





MYONE S.r.l

Via Abbate Tommaso, 52
30020 Quarto D'Altino (VE) ITALY

T +39 0422 824384

info@myoneautomation.com
www.myoneautomation.com