



redundant sliding doors for escape routes



TÜV Thüringen
certification

LUCE R

Access points that are also used as escape routes within a public or private location require an operator designed to comply fully with regulations, ensuring safety and reliability. The Luce R automatic sliding door operator has a control unit with double electronic control and a double-winding motor, ensuring that the door will open in any situation, even when there is no power. The special TÜV-certified operation enables the operator to be installed without the need for other wired safety or anti-panic systems in the frame. Available in single-leaf (up to 140 kg) or double-leaf (up to 120+120 kg) versions.



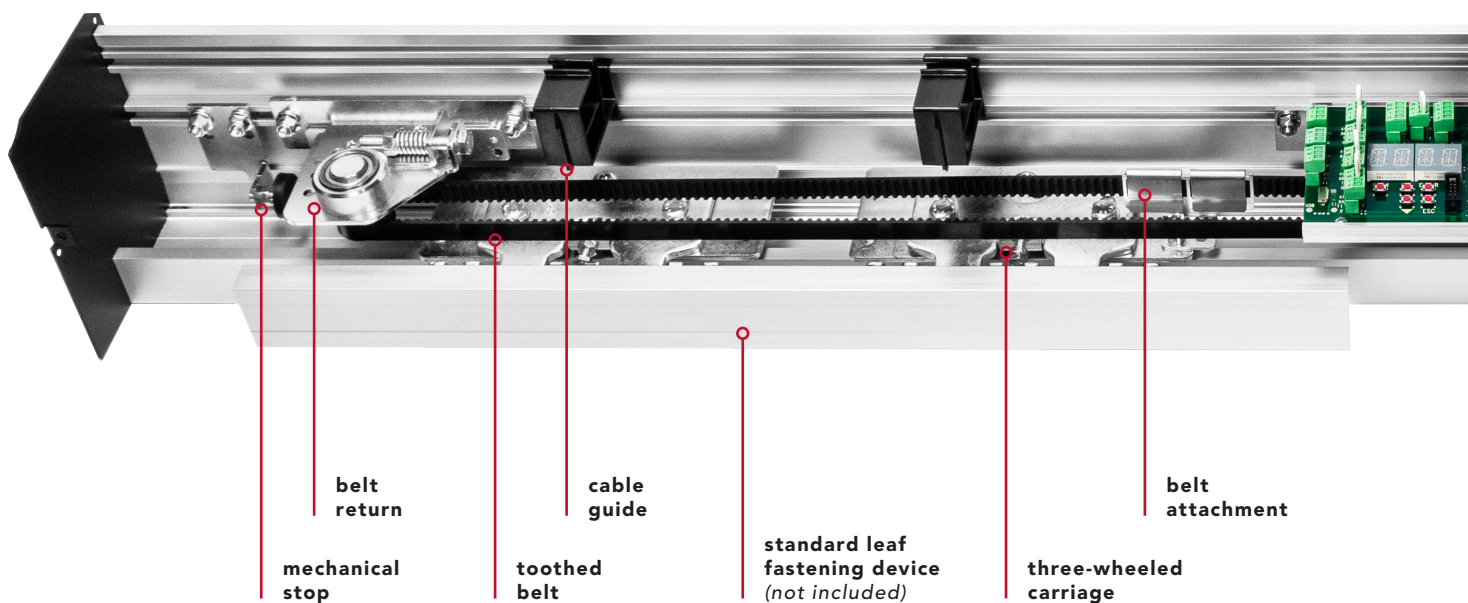
LUCE R



download LUCE R instructions and certificates

www.myoneautomation.com

Operator for sliding doors designed to ensure maximum safety, reliability and above all certified (TÜV) operation without the need to install anti-panic devices in the frame. The operator has a double-winding brushless motor and integrated control unit with double electronic control. Every 24 hours the control unit runs functional tests on all electronic parts and safety systems to ensure that the door opens at any time in an emergency. Continuous operation guaranteed.



technical data

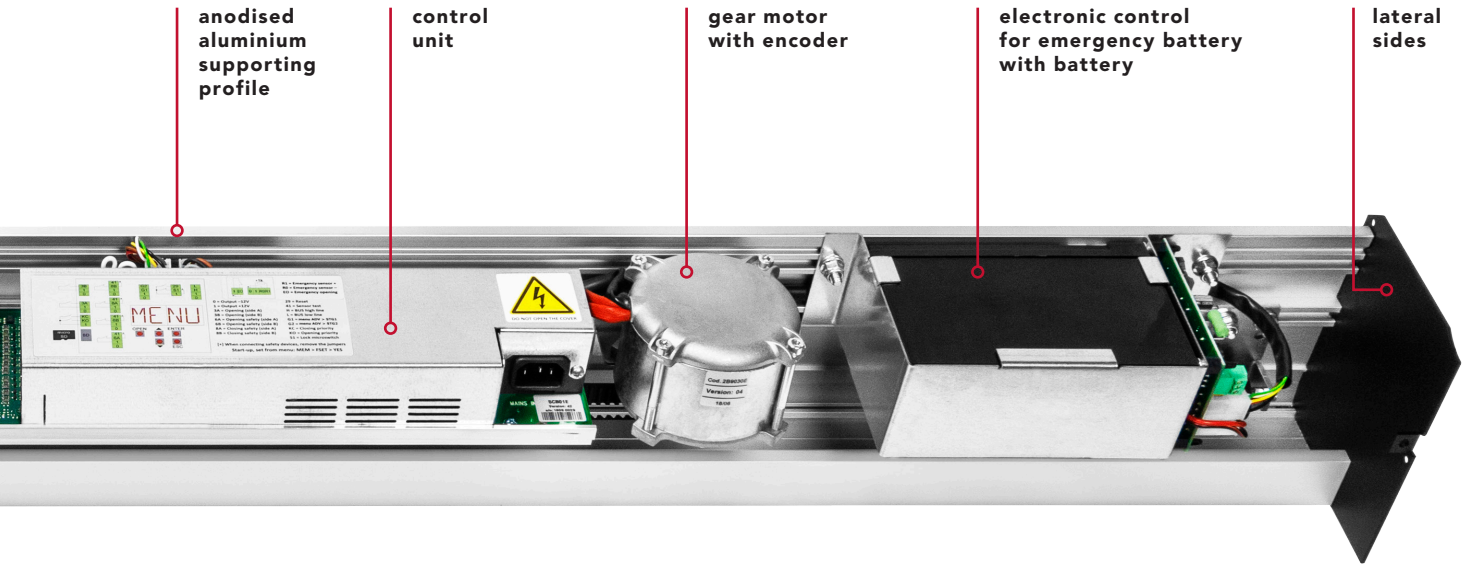
power supply	full range 100÷240 Vac 50/60 Hz
power consumption	70 W
power consumption in stand-by	10 W
accessories power supply	24 Vdc = / 1 A max
maximum speed 1 door	0.7 m/s
maximum speed 2 doors	1.4 m/s
maximum load 1 door	140 kg
maximum load 2 doors	120 + 120 kg
type and frequency of use	continuous operation = 100%
operating temperature	-15°C / +50°C
protection degree	IP20
data backup memory	standard micro SD



1 leaf
max. weight
140 kg

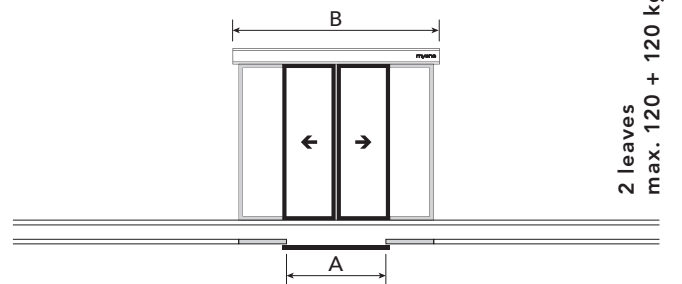
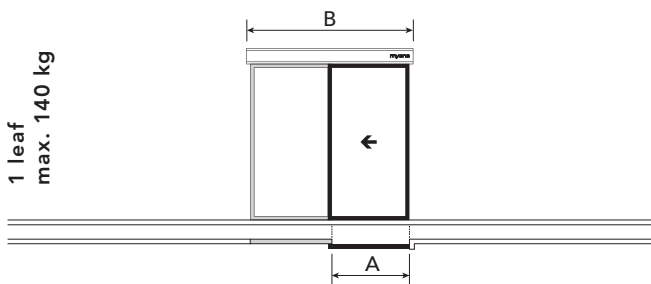


2 leaves
max. weight
120 + 120 kg



redundant preassembled

*The values of the passage size (A) and of the leaf are indicative and include an overlap of around 50 mm.



	A	B
LUCER1901	900 mm	1900 mm
LUCER2101	1000 mm	2100 mm
LUCER2501	1200 mm	2500 mm
LUCER2901	1400 mm	2900 mm
LUCER3301	1600 mm	3300 mm
LUCER3701	1800 mm	3700 mm
LUCER4201	2000 mm	4200 mm
LUCER5001	2450 mm	5000 mm
LUCER6501	3100 mm	6500 mm

	A	B
LUCER1902	900 mm	1900 mm
LUCER2102	1000 mm	2100 mm
LUCER2502	1200 mm	2500 mm
LUCER2902	1400 mm	2900 mm
LUCER3302	1600 mm	3300 mm
LUCER3702	1800 mm	3700 mm
LUCER4202	2000 mm	4200 mm
LUCER5002	2450 mm	5000 mm
LUCER6502	3100 mm	6500 mm

the preassembled operator is made up of:

control unit | brushless motor | electronic control for emergency battery with battery | three-wheeled sliding carriages | anodised aluminium supporting profile and cover | belt return | mechanical end-stop | belt | cable guide | screw kit | lateral sides



mandatory components for TÜV Thüringen certification



31RD0002

Opening and safety autotest double technology sensor
for redundant automation devices. - EN 16005. DIN 18650. IP54

framed door accessories - commercial frame



01AL0030 - 1000 mm
01AL0031 - 1500 mm
01AL0032 - 2000 mm

Aluminium floor
guide for one leaf.



01FE0018

Floor guide
slider.



01AL0008 - 1000 mm
01AL0009 - 1500 mm
01AL0010 - 2000 mm

Standard leaf fastening device
complete with fixing brackets
for the carriage.

glass door accessories - fastening set for glass leaves with pre-drilled holes



99AC0004

Fastening set
for glass leaf
(10-12 mm) with
pre-drilled holes.
- L. 1000 mm



99AC0005

Fastening set
for glass leaf
(10-12 mm) with
pre-drilled holes.
- L. 1500 mm



99AC0006

Fastening set
for glass leaf
(10-12 mm) with
pre-drilled holes.
- L. 2000 mm



01FE0049

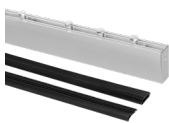
Glass door
slider.
- 6 piece pack



01FE0050

Glass door
stainless
steel slider.

glass door accessories - fastening clamp set for glass leaves



99AC0001

Fastening clamp
set for glass
leaf (10-12 mm
thickness).
- L. 1000 mm



99AC0002

Fastening clamp
set for glass
leaf (10-12 mm
thickness).
- L. 1500 mm



99AC0003

Fastening clamp
set for glass
leaf (10-12 mm
thickness).
- L. 2000 mm



01FE0049

Glass door
slider.
- 6 piece pack



01FE0050

Glass door
stainless
steel slider.



MYONE Srl

Via Abbate Tommaso, 52
30020 Quarto D'Altino (VE) ITALY

T +39 0422 824384

info@myoneautomation.com
www.myoneautomation.com